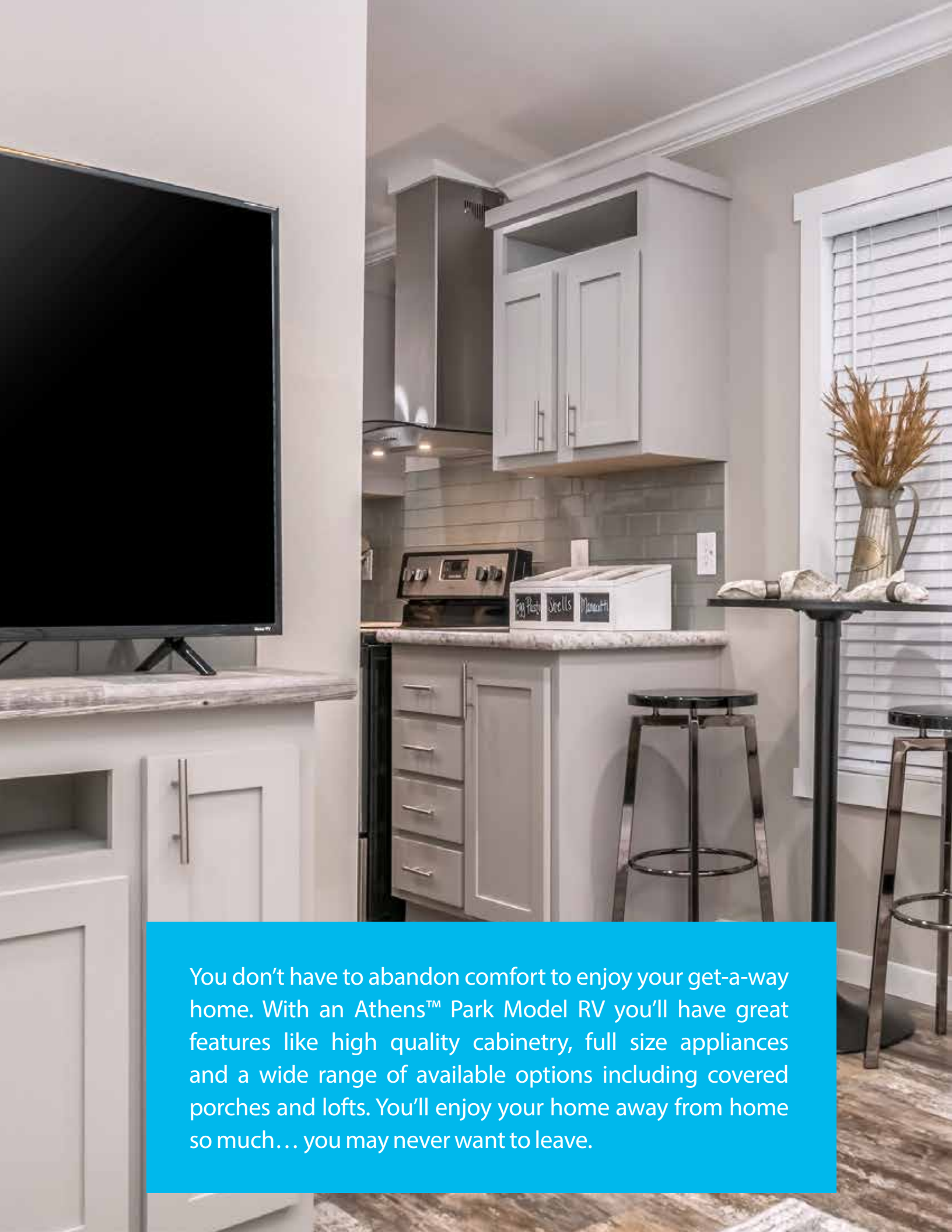




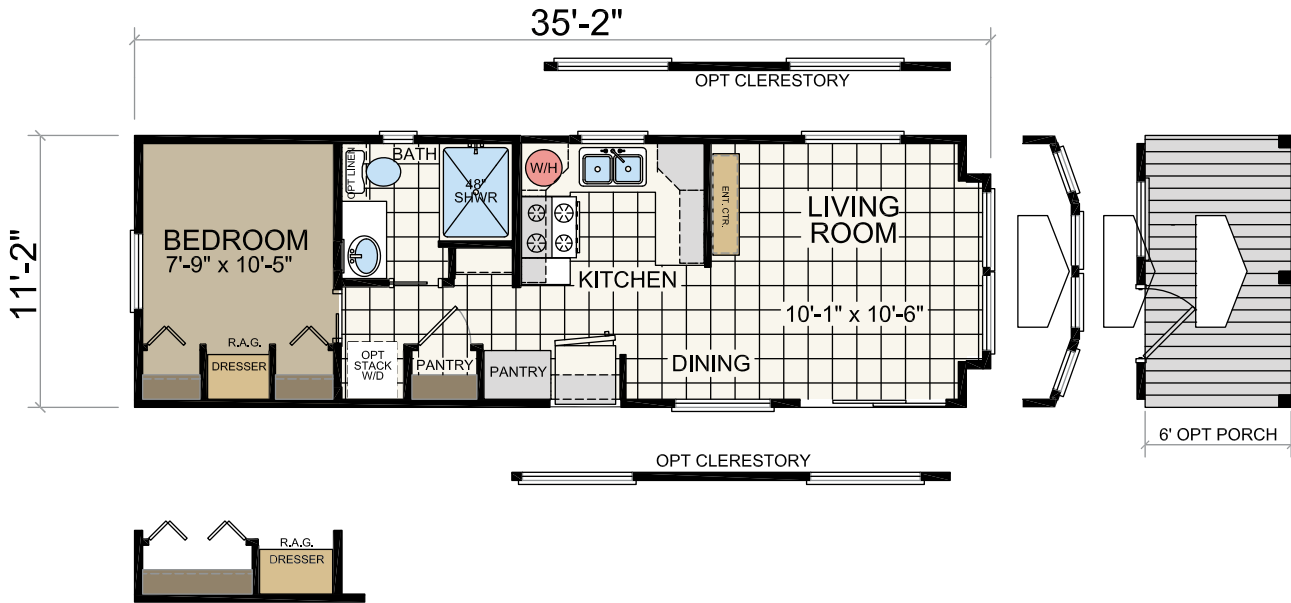
**ATHENS™**  
PARK MODEL RVs

**PARKMODEL**  
SERIES

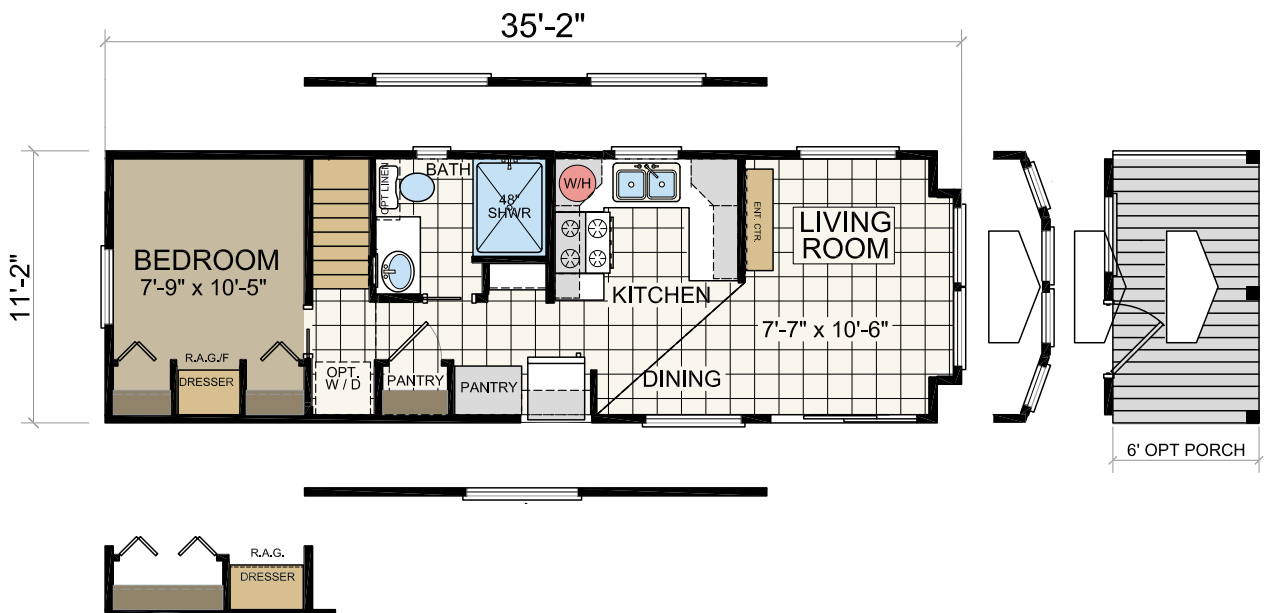


You don't have to abandon comfort to enjoy your get-a-way home. With an Athens™ Park Model RV you'll have great features like high quality cabinetry, full size appliances and a wide range of available options including covered porches and lofts. You'll enjoy your home away from home so much... you may never want to leave.

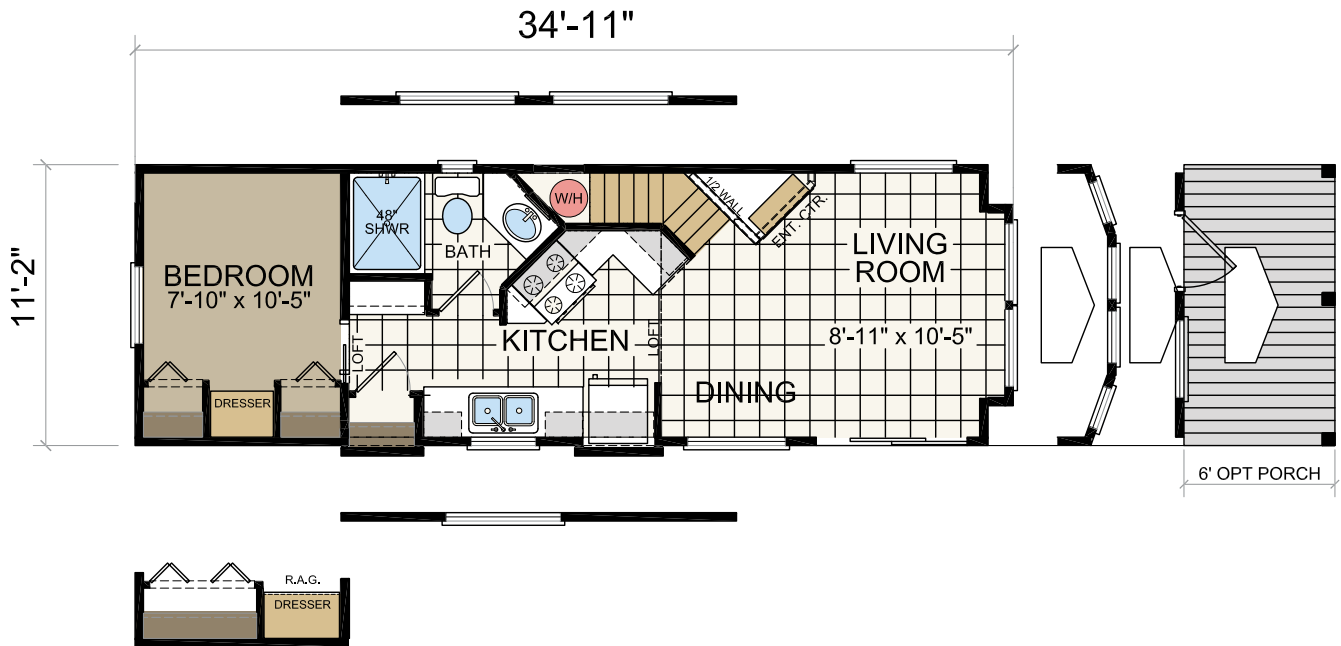
Model 504 | 11'-2" x 35'-2" | 1 bed-1 bath | 399 sq. ft.



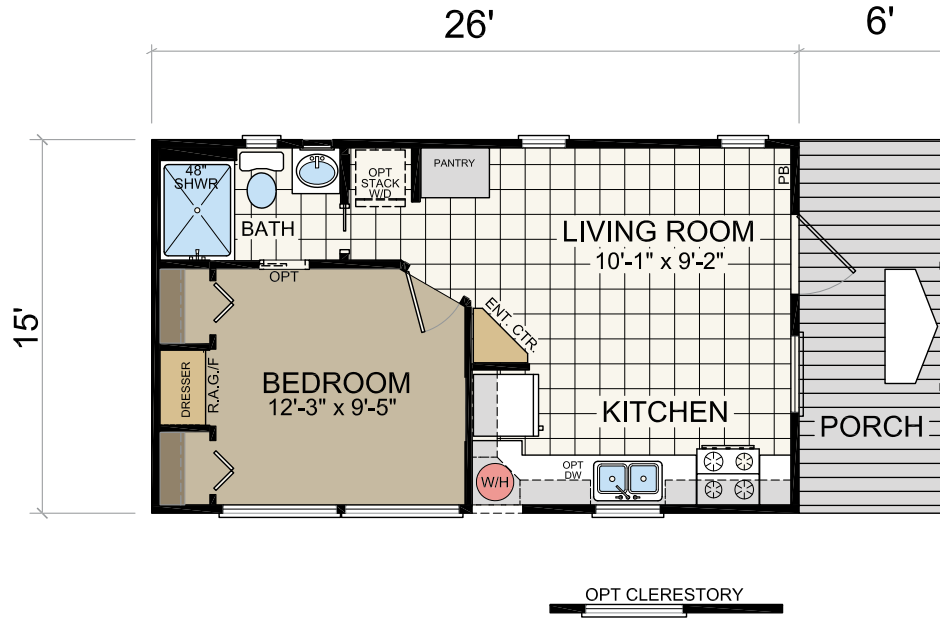
Model 504 LOFT | 11'-2" x 35'-2" | 1 bed-1 bath | 399 sq. ft.



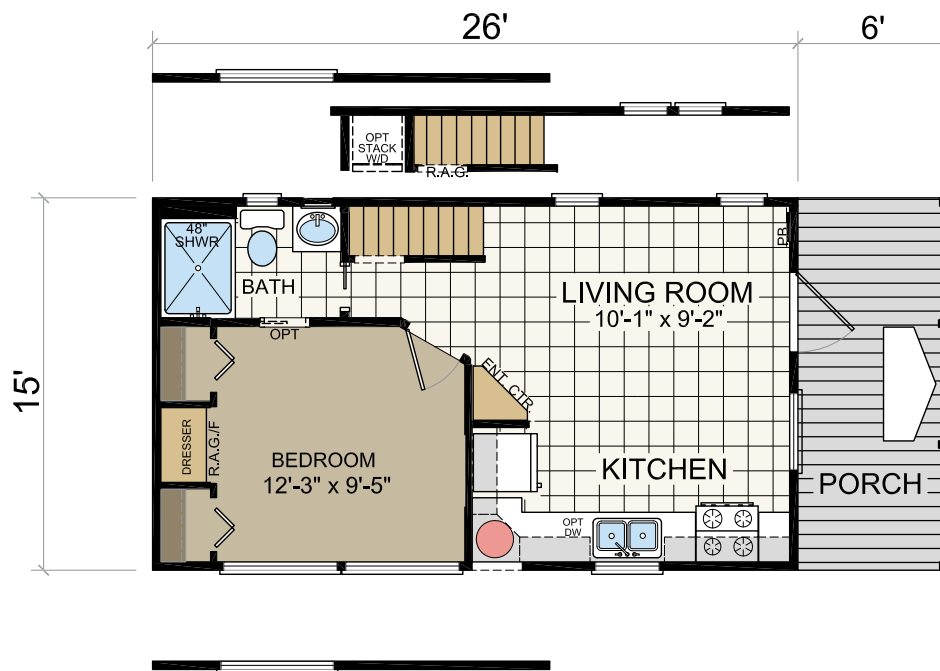
Model 509 LOFT | 11'-2" x 34'-11" | 1 bed-1 bath | 399.2 sq. ft.



Model 514 | 15' x 26' | 1 bed-1 bath | 398.6 sq. ft.

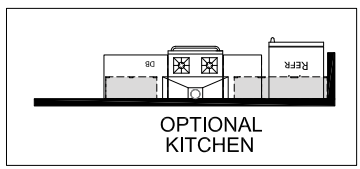
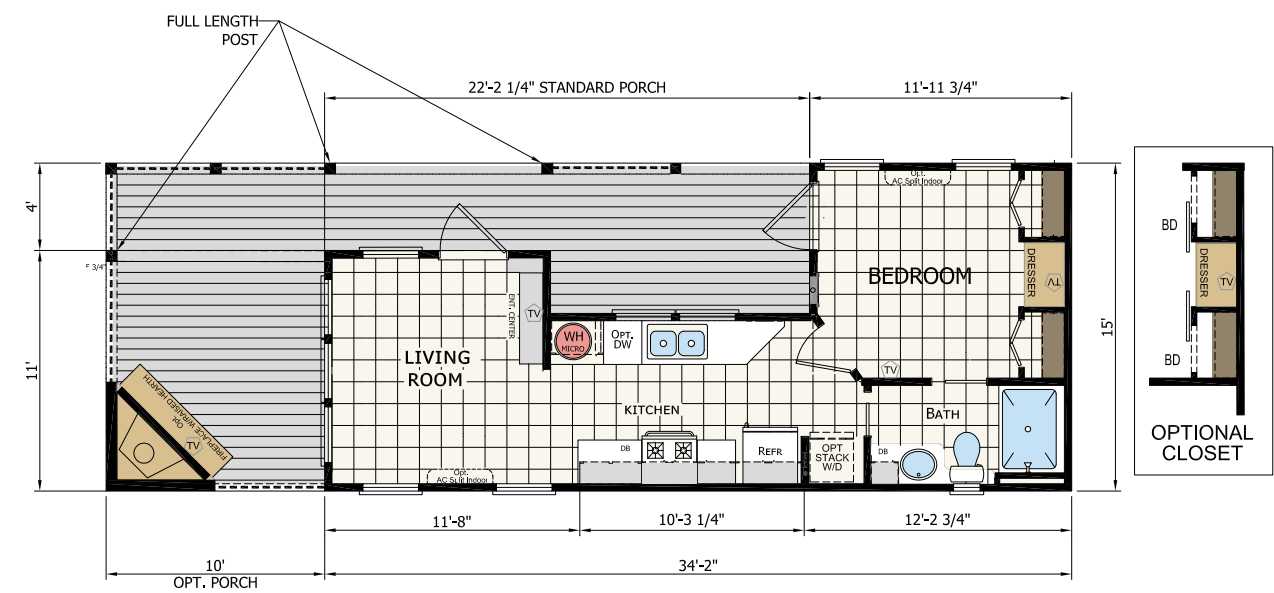


Model 514 LOFT | 15' x 26' | 1 bed-1 bath | 398.6 sq. ft.





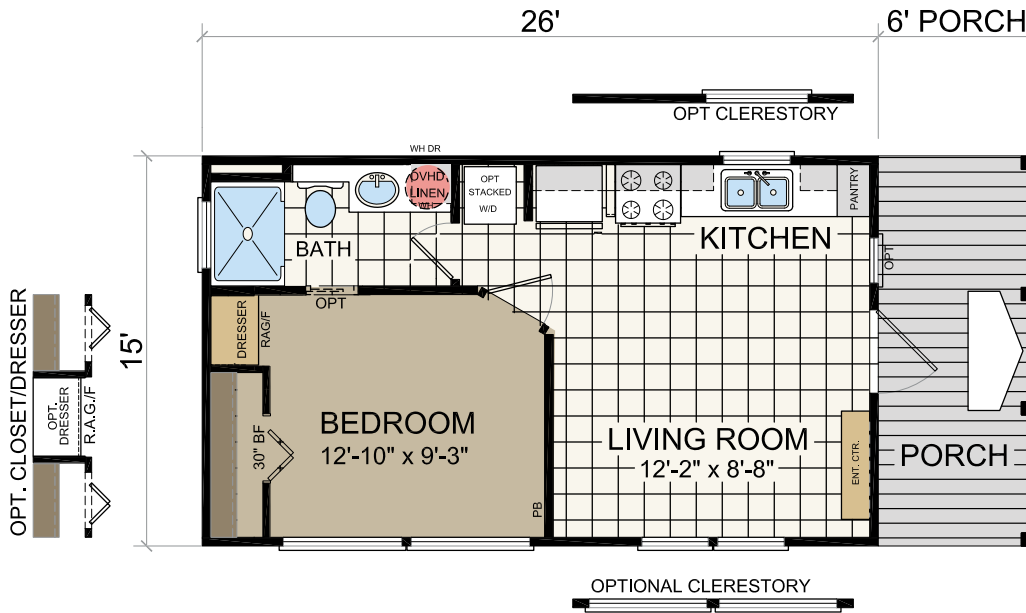
Model 520 | 15'-2" x 33'-6" | 1 bed-1 bath | 399.8 sq. ft.



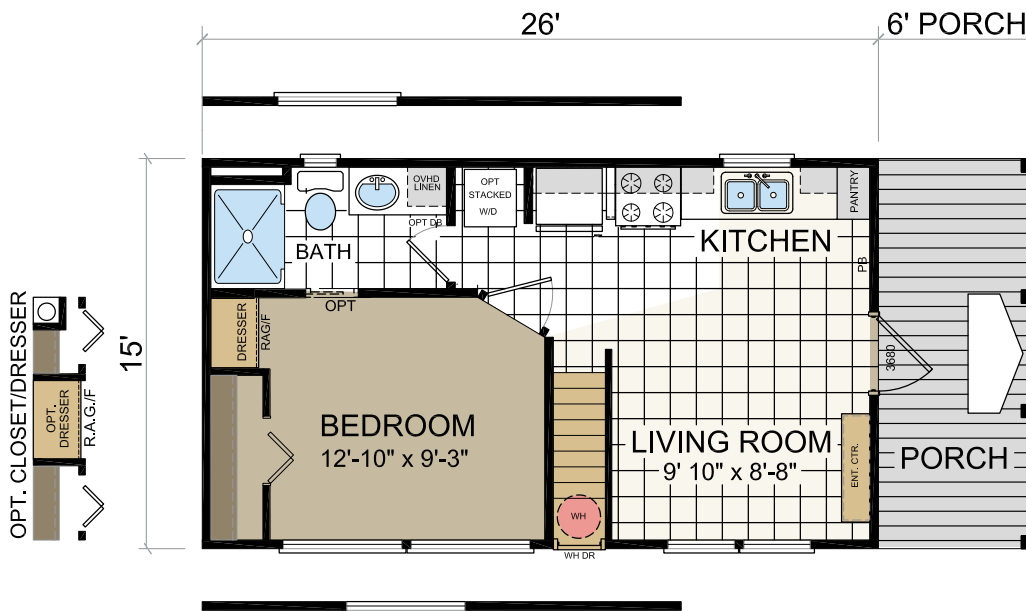
STANDARD PORCH = 123 sq.ft.  
 OPTIONAL PORCH = 150 sq.ft.



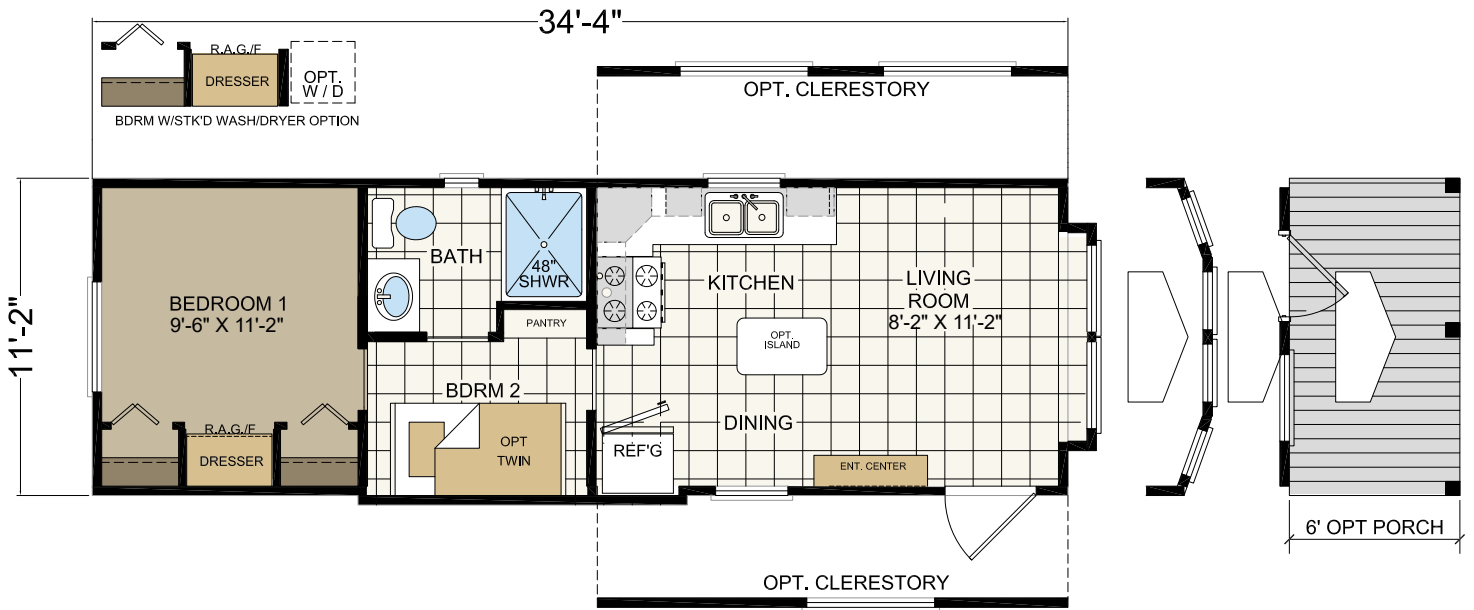
Model 522 | 15' x 26' | 1 bed-1 bath | 398.6 sq. ft.



Model 522 LOFT | 15' x 26' | 1 bed-1 bath | 398.6 sq. ft.



Model 529 | 11'-2" x 34'-4" | 2 bed-1 bath | 399 sq. ft.





# ATHENS PARK SERIES

## Standard Features

### CONSTRUCTION

CODE - ANSI 119.5  
 FLOOR JOISTS - 2x6 - 16" on Center  
 STEEL I-BEAM - 10" I-beam with 99.5" Spread  
 AXLES - 3  
 SIDEWALL - 90" (2x4) - 16" on Center  
 INTERIOR WALLS - 2x3 / 2x4 - 16" on Center  
 EAVES - FRONT END & REAR END - Nominal 12" F & R  
 SIDE EAVES - Nominal 4"  
 PORCHES - Front (Std -Some Models) - per print  
 FLOOR - 19/32" Tongue & Groove - OSB  
 2-WINDOW BOX FRONT BAY - Std Most Models  
 4-WINDOW ANGLED FRONT BAY- Optional"  
 "SINGLE AND DOUBLE LOFTS - Available (509 std.)  
 "ROOF PITCH - Varies from 6/12-9/12 (except in loft areas)

### THERMAL

WALL / FLOOR / ROOF INSULATION R-11/ R-11/ R-22

### FLOOR COVERING

CARPET - BEDROOM - 25 Ounce  
 CARPET PAD - 1/2" Rebond 8# Pad  
 LINOLEUM - LIVING ROOM / DINING / KITCHEN / BATH -  
 DiamondFlor™

### BATH

SINKS - China  
 VANITIES - 36" High  
 FAUCETS - Single-Lever Brushed Nickel  
 COUNTERTOP - Laminate  
 COUNTERTOP BACKSPLASH - Tile  
 COUNTERTOP EDGE - Laminate  
 TOILET - ELONGATED - per plan  
 TOWEL BAR / TISSUE HOLDER - Standard Installed  
 BATH MIRROR - Mirrored Medicine Cabinet  
 MEDICINE CABINET - Standard  
 BATHTUB/SHOWER- 48" Fiberglass Shower w/Door - per plan

### KITCHEN

SINKS - Stainless Steel  
 FAUCETS - Brushed Nickel / Single-Lever w/ Sprayer  
 COUNTERTOP BACKSPLASH - Tile  
 RANGE - Full Size Gas  
 RANGEHOOD - 30" Lighted  
 REFRIGERATOR - 16'FF (select models)

### PLUMBING / HEATING

FURNACE - 40,000 BTU Gas Furnace - per print  
 WATER HEATER - 20 Gallon Electric - Exterior Door  
 DUCTWORK AND VENTS - Floor / Toe Kick in Cabinets  
 WATER SHUT-OFF VALVES - Standard

### UTILITY

PLUMB/WIRE FOR WASHER & DRYER - Optional (some models)

### CABINETS

CABINET DOOR / STILES - Hardwood Autumn Brown  
 BASE CABINET SYSTEM - Drawer Over Door  
 DRAWER GUIDES - Deluxe Drawer Guides  
 FLIP DOWN SINK TRAYS IN KITCHEN - Standard  
 OVERHEAD LINED CABINETS THROUGHOUT - White  
 CENTER SHELVES OVERHEAD - Adjustable  
 BASE CABINETS - Fixed Center Shelf  
 REFRIGERATOR CABINET - Standard  
 GLASS INSERTS IN OVERHEAD CABINETS - Optional

### INTERIOR

WALL COVERINGS - 1/2" Sheet Rock  
 TAPE & TEXTURE - Standard w/ Bull Nose Corners  
 INTERIOR PAINT - Eggshell Off White  
 CEILING - Tape and Texture  
 HARDWARE - Brushed Nickel  
 POCKET DOORS - Standard (some models)  
 PANTRY/CLOSET SHELVING - Vented Metal Shelves  
 CEILING TRIM - Optional  
 WINDOW TRIM - #356 White Craftsman  
 DOOR TRIM - #356 White Craftsman  
 INTERIOR DOORS - Raised 2-Panel  
 BASEBOARD - #356 White Craftsman Throughout

### ELECTRICAL

100 AMP BOX - 50 AMP SERVICE - Standard  
 POWER CORD - Standard on 50 AMP  
 100 AMP SERVICE (NO POWER CORD) - Optional  
 WATER HEATER SHUT OFF SWITCH - KITCHEN - Standard  
 EXTERIOR RECEPTACLE - 1 Standard  
 HEAT TAPE RECEPTACLE BY WATER INLET - 1 Standard  
 READING LIGHT OVER NIGHTSTAND - Optional  
 AC DISCONNECT - NA  
 CEILING FAN - Optional  
 LIGHT SWITCHES - Rocker  
 PHONE & TV JACKS RACEWAYS - Optional  
 WIRE & BRACE FOR CEILING FAN - Optional

### LIGHTING

DINING ROOM - 4" LED Can Light  
 MASTER BATH - Satin Nickel Bar Light & 4" LED Can Light\*  
 LIVING ROOM - Switched Controlled Receptacle  
 BEDROOMS ALL - 11" Pan Light/Brushed Nickel  
 KITCHEN - 4" LED Can Light  
 FRONT EXTERIOR LIGHT - Black Lantern Type  
 REAR EXTERIOR LIGHT - Black Lantern Type

### EXTERIOR

FACIA - LP® SmartPanel®  
 SOFFIT - Vented LP  
 SHINGLES - Architectural  
 SIDING - Cement Siding  
 SIDING BACKER - House Wrap  
 EXTERIOR WINDOW TRIM - 4" LP® SmartPanel® Trim  
 CLERESTORY DORMERS - Optional  
 FRONT & REAR PORCHES - Front (Std-Some Models) per print  
 PORCH DECKING W/ STD OR OPT - Cedar  
 PORCH RAILS AND POSTS - Cedar  
 FRONT DOOR - 36x80 Steel 9-Lite Outswing or SGD - per print  
 REAR DOOR - RV Type - Some Models - per print

### WINDOWS

WINDOWS - Non-Gridded Dual Pane Single Hung Low E  
 PENTAZOID WINDOW ON HITCH END - Standard - per print  
 WINDOW TREATMENT - Cornice Boxes  
 MINI BLINDS - 2" Fauxwood Blinds  
 VERTICAL BLIND AT PATIO DOOR - Standard - per model  
 WINDOW SILLS/FACING - Wrapped Casement Style

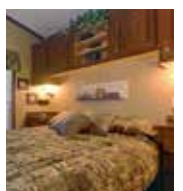
### OTHER

FIRE EXTINGUISHER - Standard  
 SMOKE DETECTORS / CO2 DETECTOR - Standard  
 TIE-DOWN STRAPS - 3 on each side

\*Some features are unavailable with loft models.

Prices and specifications are subject to change without notice.

Due to continuous product development and improvement, prices, specifications, and materials are subject to change without notice or obligation. Square footage and other dimensions are approximate. Exterior images may be artist renderings and are not intended to be an accurate representation of the home. Renderings, photos and floor plans may be shown with optional features or third-party additions.



# ATHENS™ PARK MODEL RVs

PO Box 190  
1425 Sunnyside Rd  
Weiser, ID 83672

[www.athensparkmodelrvs.com](http://www.athensparkmodelrvs.com)

CHAMPION®  
HOME BUILDERS