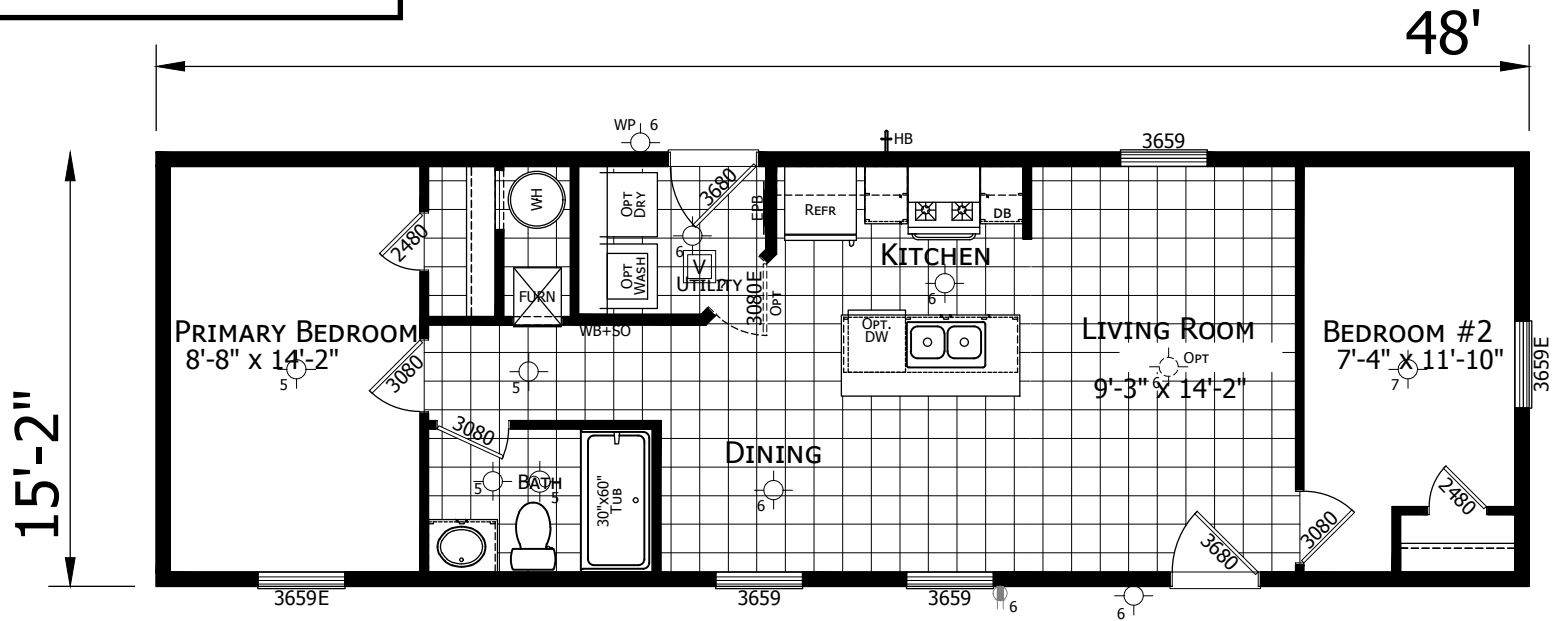


Peterson Home Center
 518 S. Fir Avenue, Deer Park, WA
 99006
 509-276-7127 (ph)
www.petersonhomecenter.com



1648H21A6H
 2 BEDROOM 1 BATH
 48'-0" x 15'-2"
 728 Sq. Ft. TOTAL



PFS PENDING

CHAMPION HOME BUILDERS
 758 W. BING BEAVER ROAD, SUITE 1000 TRACY, CA 95304
 PHONE: 208-614-6500

MODIFICATIONS

PROJECT: **1648H21A6H**
 48'-0" x 15'-2"
 2 BD 1 BT
 DRAWN BY: J. ALDRICH
 DATE: 02-09-23
 SCALE: 3/16" = 1'-0"

TITLE: **LITERATURE PLAN**
 FILENAME: 017-1648H21A6H

SHEET: **L-101**
 PROPRIETARY AND CONFIDENTIAL
 THESE DRAWINGS AND SPECIFICATIONS ARE ORIGINAL
 PROPRIETARY AND CONFIDENTIAL MATERIALS OF CHAMPION.
 COPYRIGHT - 1976-2023 BY CHAMPION